

Small Fruit Update



Providing Northwest berry growers with the information they need when they need it.

The Small Fruit Update is sent out weekly during the growing season by [Peerbolt Crop Management](#) and is funded entirely by the Northwest berry growers and industry through their commissions and councils.

January 14, 2014

Week 03

Table of Contents

- [Pest management](#)
- [Variety development](#)
- [Grower resources](#)
- [Industry news/resources](#)
- [Event calendar](#)

[USDA allows Chile blueberry fumigation in U.S. ports](#) (1/9, *The Packer*)

[The Weather Cafe](#) by Rufus La Lone [Small Fruit Cold Storage report](#)

It is the meeting season. Here's an abbreviated list of regional meetings with grower sessions over the next six weeks. A more complete list is at the bottom of this newsletter.

- **January 16—North Willamette Horticulture Society Berry Day** ~ Clackamas County Event Center, 694 NE 4th Ave, Canby, OR 97013. For the event webpage, agenda and registration, [click here](#).
- **January 27 — 2014 Blueberry Conference** ~ 9am-8pm (with dinner). Organized by the Oregon Blueberry Commission and Oregon State University. At the Embassy Suites (near airport), 7900 NE 82nd Ave, Portland. [Click here](#) for the agenda and [registration](#).
- **January 29—Oregon Hort Society's Caneberry Seminar** ~ 8-noon. at the Portland Expo Center. 2060 N. Marine Drive, Portland. 3 Oregon pesticide credits. [Click here](#) for the agenda and contact information.
- **January 29—Oregon Strawberry Commission Workshop "The potential market for fresh strawberries,"** 1-5pm, at the Portland Expo Center, 2060 N. Marine Drive, Portland. Admission is free. [Click here](#) for the agenda and contact information.
- **January 30 - February 1, 2014 —Pacific Agriculture Show and Horticulture Growers Short Course** ~ at the Tradex Exhibition Centre (Abbotsford Airport) in Abbotsford, BC. [Click here](#) for the main website. You can view the program on-line ([click here](#)) and register here ([click here](#)).
- **February 26 — 9th Annual ORBC Production Workshop for Commercial Raspberry and Blackberry Growers** ~ at the Wellspring Conference Center, 1475 Mt. Hood Ave., Woodburn, OR. Details coming soon. For more information, call the Peerbolt Crop Management office (503)289-7287 or [email Tom Peerbolt](#).

Disseminating information for: Washington

[Washington Red Raspberry Commission](#)
[Washington Blueberry Commission](#)
[Washington Strawberry Commission](#)

Oregon

[Oregon Raspberry and Blackberry Commission](#)
[Oregon Blueberry Commission](#)
[Oregon Strawberry Commission](#)

British Columbia

[Fraser Valley Strawberry Growers Association](#)
[Raspberry Industry Development Council](#)
[B.C. Blueberry Council](#)

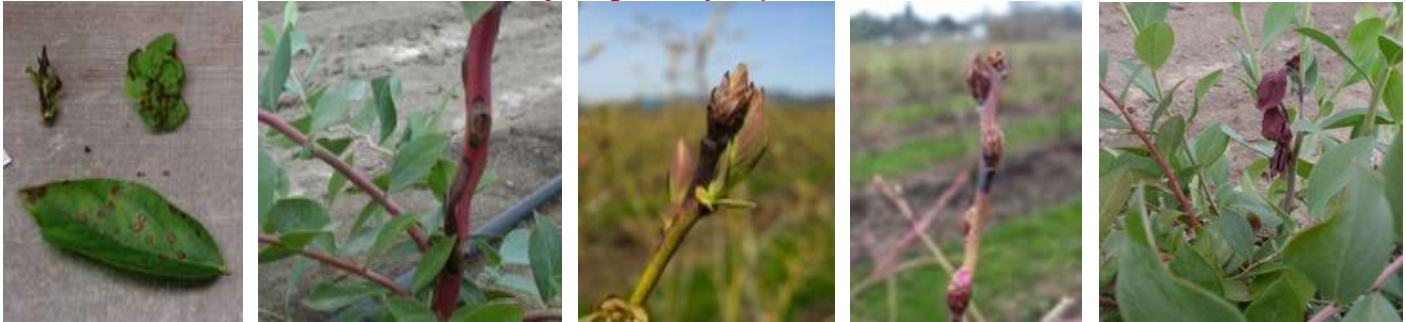
National

[North American Blueberry Council](#)

Pest Management

Pseudomonas syringae (Bacterial Blight), blueberries. [Click here](#) for a PCM Research Update on bacterial blight first posted on 1/3/13.

Pseudomonas syringae symptoms in blueberries



Photos are from Joyce Loper's & Virginia Stockwell's power point presentation of their work on this disease

- Late January and February can bring warm spells along that can cause blueberry buds to start swelling.
- These swelling buds are vulnerable to infection by the ever present bacteria, *Pseudomonas syringae*, especially during warm, wet weather.
- Once infected, those buds are vulnerable to subsequent freeze damage at a higher temperature than buds that aren't infected.
- If warm, wet weather is predicted, applications of copper can help prevent *Pseudomonas* infections
- **Caution:** Many strains of this bacteria are resistant to copper compounds. Avoid over applying to help minimize resistance.

Starling management: Right now starlings are getting ready to fledge. Population control becomes very difficult later into the season because they multiply rapidly. This is a major pest species that needs year round management attention.

- [Click here](#) for a starling fact sheet.
- [Click here](#) for a starling nesting fact sheet.
- [Click here](#) for the Okanagan (B.C.) grape grower starling trapping 2010 program synopsis. This was a well documented and well run starling management plan.

[Click here](#) to go back to the top of this newsletter.

Variety Development

- [Blackberry Cultivars for Oregon](#), the Oregon State University publication, has been updated as of January, 2014.

Grower Resources

- [Are soil nematodes beneficial or harmful?](#) (12/27/13, MSU Extension)
- [Plant essential nutrients exist as anions and cations. What does that mean for plant production & why should growers be aware?](#) (MSU Extension, 12/4/13)

Industry news/resources

Newsletters/ Berry reports

- [Rural Migration News](#) (January, 2014, 1st quarter edition) *Migration News summarizes and analyzes the most important immigration and integration developments of the preceding quarter.*
- [Whatcom Ag Monthly](#) *Produced by WSU Whatcom County Extension. Includes excellent berry crop information.*
- [The Source](#) (1/13) *Marketing report from The Produce News.*

- [National Berry Report](#) Daily fresh market berry reports. Hosted by the California Strawberry Commission, this report is generated from data from the USDA Agricultural Marketing Service and is updated daily.

Magazine/website compilations

- **The Packer:** [blueberries](#), [blackberries](#), [raspberries](#), [strawberries](#).
Recent stories and fresh market pricing for the various berries from The Packer.
- **Growing Produce:** [recent berry articles](#).
- **Fresh Fruit Portal:** [blueberries](#), [blackberries](#), [raspberries](#), [strawberries](#).
Recent stories for the various berries from Fresh Fruit Portal.

Berry research blogs

- [Strawberries and Caneberries](#) by Mark Bolda, UC Davis Berry Extension Agent. **Recent entry: 1/7—Further understanding salinity in berries** Reports on recent insect and disease research and observations in California.
- [Team Rubus](#) by Gina Fernandez, North Carolina State Small Fruit Specialist. **Recent entry: 1/10—Blackberry buds checked look good at cold** Reports on issues in blackberries and raspberries from the Southeast.
- [NC Small Fruit IPM](#) by Hannah Burrack, NCSU Extension Entomologist, **Recent entry: 1/10—Solitary bees in pruned canes** Reports on recent insect research and observations in the Southeast.

Immigration/Ag Labor

- [Guest worker summit planned for labor conference](#) (1/7, Good Fruit Grower) Scheduled for 2/12 in Kennewick by the Washington Farm Labor Assn. [Click here](#) to register or for more information.

Biocontrol

- [Wasp seen as solution to invasive stink bug](#) (1/7, Capital Press)

Technology/equipment

- [High-capacity sorter ensures gentle handling of delicate fruit](#) (1/9, Food Engineering)
- [Taking flight: A Portland company makes a play to be the “Henry Ford” of applying drone technology to ag](#) (1/9, Capital Press)
- [Equipment sheds light on strawberry harvest at night](#) (1/8, The Packer)

Politics & Ag

Welcome to the new year...same as the old year.

- [Farm bill in trouble](#) (1/9, Politico)
- [Farm bill, immigration reform top produce industry issues for 2014](#) (1/8, The Produce News)
- [Congress: Farm, immigration bills remain to be finalized in 2014](#) (1/8, Ag Alert)

Business

- [California Giant Berry Farms celebrates New Year with new acreage, challenges](#) (1/9, Fresh Plaza)
- [HBF International owners expand roles](#) (1/9, The Packer)
- [Del Rey Avocado enters blueberry business with Peruvian imports](#) (1/8, The Produce News)

Food Safety

- [U.S. food safety a big issue in 2014](#) (1/10, UPI)
- [PrimusLabs blames Jensens, Frontera for listeria outbreak](#) (1/9, The Packer)

West

- Washington: [Fruit pest \(SWD\) on rise in central Washington](#) (1/10, Capital Press)
- Oregon/Washington: [Low snowpack raises drought concerns](#) (1/7, Capital Press)
- California: [Drought brings statewide agricultural impact](#) (1/8, Ag Alert)
- California: [First California snow survey of 2014 is bleak](#) (1/6, Growing Produce)

North America

- [Cold snap hits Northeast, Midwest regions hard](#) (1/9, Growing Produce)
- [Cold weather spares Florida, Texas crops](#) (1/9, The Packer)
- [Blueberry demand on rise in U.S.](#) (1/10, Fresh Plaza) [Click here](#) to see the USHBC 2013 market survey facts & figures.
- Florida: [Growers work to better compete against rising Mexican competition](#) (1/8, The Grower)
- Florida: [Florida’s future is berry bright](#) (12/31, Coastal Healthy Living)

International

(FFP=Fresh Fruit Portal)

- [Fresh Fruit Portal launches 'Blueberries of the World 2014' Special Edition](#) (FFP)
- China: [China planning major changes to ag policy over the next decade](#) (1/9, Ag Professional)
- Chile: [Hundreds of Chilean exports exempt from tariffs in Asia](#) (1/3, FFP)
- Spain: ["Spain is developing increasingly strong and sweet strawberry varieties"](#) (1/10, Fresh Plaza)
- Chile: [Chilean blueberry exports significantly lower than expected](#) (1/10, Fresh Plaza)
- Chile: [Strike brings strange mix of solidarity and struggle to Chilean fruit sector](#) (1/9, FFP)
- Germany: [The new strawberry variety Garda invades Germany](#) (1/9, Fresh Plaza)
- Italy: [Soil-less Adelita raspberry in Basilicata](#) (1/9, Fresh Plaza)
- Morocco: [U.S. considers Moroccan blueberries](#) (1/3, FFP)
- Australia: [A careful balance between processed and fresh raspberries](#) (12/18, Fresh Plaza)

[Click here](#) to go back to the top of this newsletter.



Event calendar

- **January 14 — Oregon Raspberry and Blackberry Commission** ~ Regular meeting begins at 11 am at [Langdon Farms Golf Club](#). Committee meetings start beforehand: 9:00 Promotions, 9:30 Legislative/Labor/Education, 9:50 Communications and Product Safety, 10:10 Research, 10:30 Budget. Call 541-758-4043 or [email](#) Phillip Gutt for more information. [Click here](#) for the agenda.
- **January 16—North Willamette Horticulture Society Berry Day** ~ Clackamas County Event Center, 694 NE 4th Ave, Canby, OR 97013. For the event webpage and registration, [click here](#). For the agenda schedule, [click here](#).
- **January 22 — Washington Red Raspberry Commission** ~ Board meeting in Lynden, WA. [Contact Henry Bierlink](#) for more information.
- **January 27 — 2014 Blueberry Conference** ~ organized by the Oregon Blueberry Commission and Oregon State University. At the Embassy Suites (near airport), 7900 NE 82nd Ave, Portland, OR, 9am-8pm. [Click here](#) for the agenda. [Click here](#) for the registration form. For more information contact Wei Yang, [by email](#).
- **January 28 - 30 — Northwest Ag Show** ~ at the Portland Expo Center. 2060 N. Marine Drive, Portland, OR 97217. [Click here](#), for more information.
- **January 29—Oregon Hort Society's Caneberry Seminar** ~ at the Portland Expo Center. 2060 N. Marine Drive, Portland, OR 97217. Details will be coming soon. For information, contact Tom Peerbolt (tom@peerbolt.com, 503-289-7287). For the agenda, [click here](#).
- **January 29 — Oregon Strawberry Commission Workshop "The potential market for fresh strawberries,"** 1-5pm, at the Portland Expo Center, 2060 N. Marine Drive, Portland, OR 97217. Admission is free. All experienced, new, and transition strawberry growers encouraged to attend.

For the agenda, [click here](#). [Email Lora Liegel](#) at Peerbolt Crop Management with questions or call the office at 503-289-7287.

- **January 30 - February 1, 2014 —Pacific Agriculture Show and Horticulture Growers Short Course** ~ at the Tradex Exhibition Centre (Abbotsford Airport) in Abbotsford, BC. [Click here](#) for the main website. You can view the program on-line ([click here](#)) and register by ([clicking here](#)).
- **February 4 — Oregon Strawberry Commission** ~ Budget meeting begins at 2 pm at Langdon Farms Golf Club. Regular meeting at 3 pm. Call 541-758-4043 or [email Phillip Gutt](#) for more information.
- **February 11 — OSU eXtension Webinar on SWD** ~ Biologically based organic management strategies for Spotted Wing Drosophila. Sign up now for the webinar. [Click here](#) for the registration page and more information.
- **February 11 — Blueberry Production Workshop** in Eugene. The workshop will focus on biological and cultural controls for Mummyberry and SWD. [Visit the website](#) for more information or contact Jen Miller at jmiller@pesticide.org or 208-850-6504.
- **February 18 — Bayer's Bee Care Tour** ~ "Buzzing into Oregon: The Bee Care Tour. The Tour is part of Bayer's effort to foster education and collaboration among growers, beekeepers, researchers and other interested in engaging in topics related to honey bee health." Oregon State University, 10 am - Noon, CH2M Hill Alumni Center, Cascade Ballroom, 725 SW 26th St., Corvallis, OR 97331. [Email](#) for more information.
- **February 22 — Oregon Small Farms Conference**. This daylong event is geared toward farmers, agriculture professionals, food policy advocates, students and managers of farmers markets. OSU campus in Corvallis at the LaSells Steward Center and CH2M Hill Alumni Center. [Click here](#) for conference registration and a link to the schedule.
- **February 26 — 9th Annual ORBC Production Workshop for Commercial Raspberry and Blackberry Growers** ~ at the Wellspring Conference Center, 1475 Mt. Hood Ave., Woodburn, OR. Details coming soon. For more information, call the Peerbolt Crop Management office (503)289-7287 or [email Tom Peerbolt](#).
- **March 10-11 — International Blueberry Organization Annual Conference**. The International Blueberry Organization (IBO) will hold its fourth annual event in Guadalajara, Mexico. [Click here](#) for a report on the event by Fresh Fruit Portal, or [click here](#) for a link to the IBO's website.
- **March 18 — Oregon Blueberry Commission** ~ 12 pm (Budget Preparation), at Chemeketa Events at Winema, Building 48, Room 210. Contact Bryan Ostlund for more information at 503-364-2944 or bryan@ostlund.com.
- **April 7- 9 — Global Berry Congress** ~ in Amsterdam. [Click here](#) for the conference's information page and registration.
- **April 9 — Washington Red Raspberry Commission** ~ Board meeting in Puyallup. [Contact Henry Bierlink](#) for more information.
- **April 29 — Oregon Blueberry Commission** ~ 12 pm (Budget Hearing), at Chemeketa Events at Winema, Building 48, Room 210. Contact Bryan Ostlund for more information at 503-364-2944 or bryan@ostlund.com.

[Click here](#) to go back to the top of this newsletter.

Archived Small Fruit Updates

(For older Updates [click here](#).)

[01-SFU01-02-14](#) [48-SFU11-26-13](#) [46-SFU11-12-13](#)

This document is a guide and not intended as a recommendation or endorsement.

Consult with your supplier, field representative, or pest consultant.