

Small Fruit Update



The Small Fruit Update is sent out weekly during the growing season by [Peerbolt Crop Management](#) and is funded entirely by the Northwest berry growers and industry through their commissions and councils.

January 6, 2016

Week 1

Table of Contents

- [Events](#)
- [Grower Resources](#)
- [Research Updates](#)
- [Pest Management](#)
- [Industry News](#)

Everyone talks about the weather....

- [NASA images compare 2016 and 1998 El Nino years](#) (12/30, [andnowyouknow.com](#))
- [California snowpack deepens amid long drought](#) (12/30, [Capital Press](#))
- [Heavy snow eases Oregon drought concern, but uncertainties remain](#) (12/30, [Capital Press](#))
- [Washington state to end drought declaration](#) (12/22, [Capital Press](#))

[The Weather Cafe](#) by Rufus La Lone [Small Fruit Cold Storage report](#)



Disseminating information for:

Washington

[Washington Red Raspberry Commission](#)
[Washington Blueberry Commission](#)
[Washington Strawberry Commission](#)

Oregon

[Oregon Raspberry and Blackberry Commission](#)
[Oregon Blueberry Commission](#)
[Oregon Strawberry Commission](#)

British Columbia

[B.C. Strawberry Growers Association](#)
[Raspberry Industry Development Council](#)
[B.C. Blueberry Council](#)

National

[North American Blueberry Council](#)

Winter Blueberries in SW Washington Berry Event Calendar

Events with Grower Information Sessions

- **January 11-12 — PNW Pest Management Meetings/75th Annual Pacific Northwest Insect Management Conference** ~ At the Hilton Hotel, 921 SW 6th Ave, Portland, OR 97204
- **January 12 — Washington Blueberry Workshop** ~ at Central Washington University (Sue Lombard Hall), Ellensburg. WSU Extension & the Washington Blueberry Commission, [Go here](#) for the details & registration links. Information: [Lisa Devetter](#); 360-848-6124.
- **January 12-14 — North Willamette Horticulture Society (12th-Organic Crops section; 13th-Vegetable Section; 14th-Berry Section)** ~ Clackamas County Event Center, Canby, OR. Details and registration form available on the [event website](#).
- **January 25 — Oregon Blueberry Conference** ~ 8am-7pm, Red Lion on the River, Portland. [Go here](#) to register and see details of the event.
- **January 28-30 — Horticulture Growers Short Course at the Pacific Agriculture Show**, Tradex, Abbotsford, BC. [Go here](#) for to see the program and on-line registration.
- **February 18 — Oregon Strawberry Commission Annual Meeting** ~ at North Willamette Research & Extension Station. Email Philip Gutt for more information, pnwa@comcast.net.
- **March 9 — 11th Annual Production Workshop for Commercial Raspberry & Blackberry Growers** ~ at the Wellspring Conference Center in the Silverton Health Building, 1475 Mt. Hood Ave., Woodburn, OR. Details coming soon. For more information call the Northwest Berry Foundation (503) 289-7287.

Commission Meetings

- **January 11 — Oregon Strawberry Commission** ~ Research Meeting 11, Regular meeting noon, McMenamins Restaurant - 310 NE Evans St, McMinnville. Details TBA Contact: berries@oregon-berries.com
- **January 12 — Oregon Blueberry Commission meeting**~ (*research updates 7:30-11:30 am; committee mtngs 11:30am-12:30pm; Commission mtng 12:30pm*) at the Chemeketa Events at Winema, Building 48, Room 210, Salem. Email jenny@ostlund.com for more information.

National Berry Events

- **March 1-4 — 2016 North American Raspberry & Blackberry Conference** ~ Williamsburg, Virginia. [Go here](#) for all the details.
- **March 2-4 — North American Blueberry Council & US Highbush Blueberry Council Spring meetings** ~ Dallas, Texas. [Go here](#) for the draft agenda. Go here for more information: [U.S. Highbush Blueberry Council website](#).



Grower Resources

- [Hard to gather good plant tissue samples](#) (2 minute video from Ag Professional) *Comments from Daniel Kaiser, Univ. of Minnesota on the difficulty of getting good feedback from plant tissue samples.*
- [Should I use dolomitic or calcitic lime?](#) (12/17, MSU Extension)

Research Updates

Berry research blogs

- [Strawberries and Caneberries](#) by Mark Bolda, UC Davis Berry Extension Agent. **Recent Entry: (12/14) Update on UC strawberry varieties** *Reports on recent insect and disease research and observations in California.*
- [Team Rubus](#) by Gina Fernandez, North Carolina State Small Fruit Specialist. **Recent Entry: (12/16) Blackberry and raspberry seasonal checklist for Winter 2015-16** *Reports on issues in blackberries and raspberries from the Southeast.*

Pest Management

- [Lygus Management in Strawberries](#) (11/30/15, UC Davis Extension)

Breeding/New Berry Crops

- [Canadian nursery brings new honeyberry varieties to world stage](#) (12/4, Fresh Fruit Portal)
- [Update on UC Strawberry Varieties](#) (12/14/15, UC Davis Extension)

Pollinators

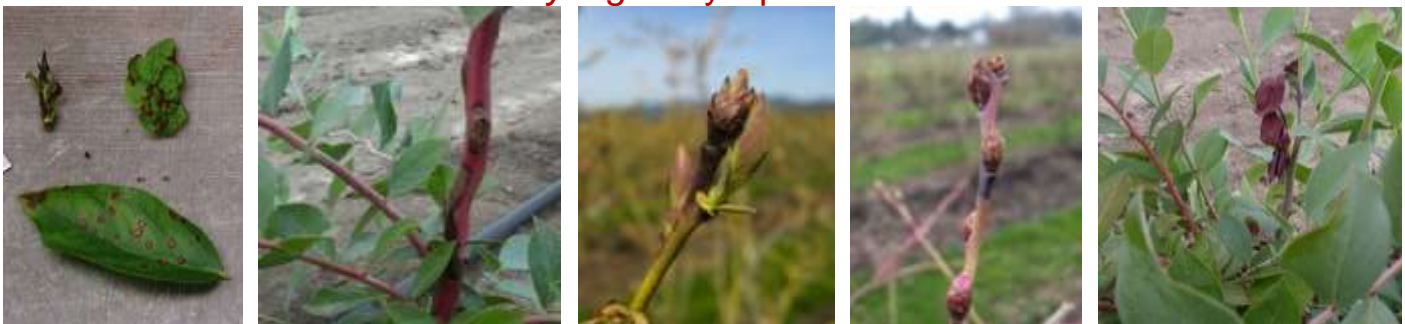
- [Wild bee decline threatens U.S. crop production, study finds](#) (1/4, Fresh Fruit Portal)
- [USDA/NASS begins surveys to assess honey bee colony health, impact on ag](#) (12/30, Ag Professional)

Pest Management Information

Bacterial Blight (*Pseudomonas syringae*), blueberries.

- [Click here](#) for a PCM Research Update on bacterial blight first posted on 1/3/13.

Pseudomonas syringae symptoms in blueberries



Photos are from Joyce Loper's & Virginia Stockwell's power point presentation of their work on this disease

- Late January and February can bring warm spells that can cause blueberry buds to start swelling.
- These swelling buds are vulnerable to infection by the ever present bacteria, *Pseudomonas syringae*, especially during warm, wet weather.
- Once infected, those buds are vulnerable to subsequent freeze damage at a higher temperature than buds that aren't infected.
- If warm, wet weather is predicted, applications of copper can help prevent *Pseudomonas* infections
- **Caution:** Many strains of this bacteria are resistant to copper compounds. Avoid over applying to help minimize resistance.

Starling management

- Right now starlings are starting to think about fledging (*you know they are...*). Population control becomes very difficult once that starts because they multiply rapidly. This is a major pest species that needs year round management attention.
 - [Click here](#) for a starling fact sheet.
 - [Click here](#) for a starling nesting fact sheet.
- If they're thinking about fledging, you need to think about managing them.*



Blueberries in the Northwestern Willamette Valley
Photo by Tom Peerbolt

Industry news/resources

Newsletters/ berry reports

- [Whatcom Ag Monthly](#) Produced by WSU Whatcom County Extension. Includes excellent berry crop information.
- [National Berry Report](#) Daily fresh market berry reports generated from data from the USDA Agricultural Marketing Service. Hosted by the California Strawberry Commission.
- [Weekly Market Report from General Produce](#)
- [Weekly Chilean Blueberry Committee Crop & Exports Report](#)
- [USDA Market News \(Fruits & Vegetables\)](#)

Magazine/website compilations

- Fresh Plaza: [fruit](#)
- The Packer: [blueberries](#), [blackberries](#), [raspberries](#), [strawberries](#).
- Growing Produce: [recent berry articles](#).
- Andnowyouknow.com: [blueberries](#), [blackberries](#), [raspberries](#), [strawberries](#).
- Fruitnet-Eurofruit: [recent berry articles](#).
- Fresh Fruit Portal: [blueberries](#), [blackberries](#), [raspberries](#), [strawberries](#).

Weather/Climate

- [El Nino shows no sign of waning, says NASA](#) (12/30, Fresh Fruit Portal)
- [Meteorologist predicts variation on El Nino pattern: A wet PNW winter](#) (12/21, Capital Press)

Water

- [Agriculture assumes huge stake in future water availability](#) (12/4, Fruit Grower News)

Precision Ag

- [5 "must-haves" for precision agriculture to thrive in 2016](#) (12/2, Precision Ag)

Technology

- [Don't forget to register your drone with the FAA; 45,000+ already registered](#) (12/29, andnowyouknow.com)
- [Packaging specialist introduces soft fruit shelf life extender](#) (12/9, The Packer)

Business

- Opinion: [Silence will result in the demise of the family farmer](#) (12/8, Fresh Fruit Portal) *Excellent points on the disconnect between farmers and the general public.*
- [State of the Industry: Frozen Foods](#) (Food Business News)

Organics

- [USDA expands organic exemption from marketing orders](#) (12/30, The Packer)
- [How 'organic' agriculture evolved from marketing tool to evil empire](#) (12/2, Forbes)

Technology

- [Portable frost control gives growers more options](#) (11/29, Growing Produce)
- [Could smartphone sensor detect fruit freshness?](#) (1/4, Fresh Fruit Portal)

West

- Oregon: [Townhall meetings focus on minimum wage proposals](#) (12/31, Capital Press)
- Oregon: [Oregon ag's economic impact yields jobs, sales](#) (12/4, Capital Press)

North America

- [US Highbush Blueberry Council seeks member nominees](#) (12/21, The Packer)
- Florida: [Strawberries get out the door early](#) (1/4, The Packer)
- Florida: [Despite light start, larger Florida strawberry volume expected](#) (12/28, The Packer)

International

- Chile/China: [First Chilean cherries and blueberries reach China](#) (1/4, Fresh Plaza)
- Argentina: Blueberry harvest ends. [Go here](#) for week 52 report. [Go here](#) for the full report with all the seasonal statistics.
- Argentina: [Blueberry exports slide 10% in "unusual" season](#) (12/24, Fresh Fruit Portal)
- China: [CA \(Controlled Atmosphere\) storage taking off in China](#) (12/8, Fresh Plaza)
- [Canadian Blueberries Enter Chinese Market](#) (12/3, Fresh Plaza)

Archived Small Fruit Updates

(For older Updates [go here.](#))

[48-SFU11-25-15](#)

[46-SFU11-10-15](#)

[44-SFU10-28-15](#)